

SENTINEL NORTH PARTNERSHIP RESEARCH CHAIR IN ECONOMICS AND BRAIN HEALTH

Faculty of Social Sciences

MISSION

The mission of the Sentinel North Partnership Research Chair in Economics and Brain Health is to understand the dynamics and causal relationships between income inequality, the organization of health care systems and brain health. This will help develop strategies and policies that support well-being, inclusion and social mobility, especially among vulnerable populations.

CHAIR CREATED ON: August 28, 2019

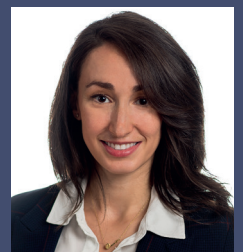
BACKGROUND

Mental and brain health disorders have become a global driver of health care spending in recent years. In parallel, growing inequality has become a serious challenge for most societies. While each phenomenon is on its own a major source of concern for decision makers and policymakers, their interactions present challenges that cannot be left unaddressed. This is especially true in the context of northern communities, where the types and the level of inequalities observed is evolving rapidly. Still, much remains to be understood about the relationship between changing income distributions, brain health trajectories, and human capital accumulation.

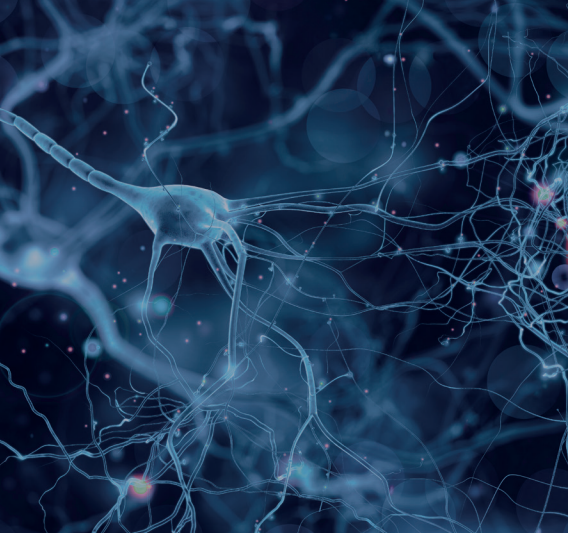
The Sentinel North Partnership Research Chair in Economics and Brain Health will harness tools developed in economics, recent advances from research in psychiatry and the expertise developed within the healthcare system to study the causal links between these phenomena. This work will involve close collaborations with partners from academia, from the health system as well as from clinical and social environments. It will seek to contribute to both scientific progress and to the public conversation.

CHAIRHOLDER

Maripier Isabelle is an assistant professor in the Economics Department at Université Laval and a researcher at the CERVO Brain Research Centre. She holds a PhD in economics from the University of Toronto and completed a postdoctoral fellowship at the James M. and Cathleen D. Stone Centre for the Study of Wealth Inequality at INSEAD, in France. Her research seeks to inform the evaluation and design of public policies. She works on questions at the intersection of health economics, labour economics, social inequality, and brain health.



UNIVERSITÉ
LAVAL



OBJECTIVES

- > Explore the dynamics and causal relationships between changes in income inequality, the organization of healthcare systems, and brain health
- > Combine tools developed in economics with insights from institutional and clinical partners, specialists in psychiatry and in the neurosciences, as well as health systems administrators to identify promising policy avenues to improve mental health and socioeconomic mobility

PARTNER

Funded by the Canada First Research Excellence Fund, Sentinel North allows Université Laval to draw on over a half-century of northern and optics/photonics research to develop innovative new technology and improve our understanding of the northern environment and its effect on human beings and their health. This new Chair is part of the major transdisciplinary research program at Sentinel North whose mission includes training the next generation of researchers that will help address some of the complex challenges facing the changing North.



BENEFITS

- > Support northern communities as they develop and implement innovative policies and strategies to improve social mobility and health in an ever-changing environment
- > Help policymakers take steps to improve brain health trajectories in at-risk individuals and reduce the effects of growing inequality on individual well-being
- > Contribute to the construction and enrichment of datasets that can be used to jointly study brain health trajectories and income trajectories
- > Establish new, long-term collaborations with clinical and institutional partners
- > Support a new generation of researchers interested in combining economics research and research on brain disease



©Alexandre Forest/ArcticNet

INFORMATION

Maripier Isabelle
 Faculty of Social Sciences
 Pavillon J.-A.-DeSève, Room 2214
 1025 avenue des Sciences-Humaines
 Québec City, Québec G1V 0A6
www.fss.ulaval.ca/economique
ecn@ecn.ulaval.ca

